

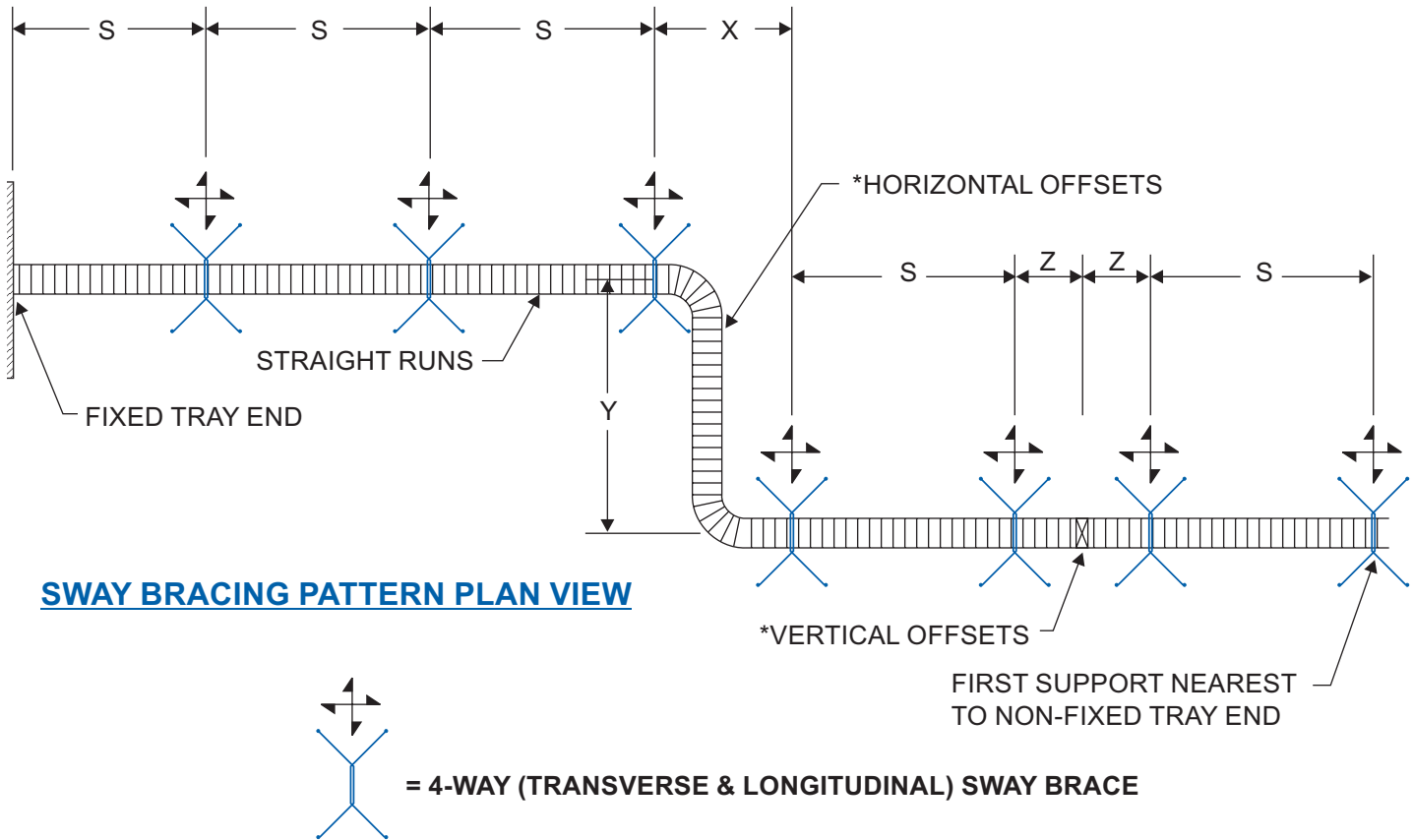


Approved Fixed Equipment Anchorage  
California Office of Statewide Health Planning  
and Development (OSHPD)  
Based on CBC 2001 OPA-0619

City of Los Angeles Tested and Approved  
For all mechanical, plumbing and electrical  
piping, conduit, equipment and systems -  
including fire sprinklers

## SEISMIC WIRE ROPE/CABLE™ BRACING

Break Strength Certified - Color Coded - Prestretched



- \*NOTES: (1) FOR HORIZONTAL OFFSETS, A SWAY BRACE SHOULD BE LOCATED AT THE CABLE TRAY SUPPORT NEAREST TO ONE END OF THE OFFSET.  
(2) IT IS RECOMMENDED THAT THE MAX. VERTICAL OFFSET WITHOUT A SWAY BRACE BE 30 FEET AND THAT THE MAX. SPACING FOR SWAY BRACES ON VERTICAL TRAYS SHOULD BE 40 FEET.

BRACED COMPONENT DESCRIPTION	MAXIMUM "S"	MAXIMUM "X" + "Y"	MAXIMUM "Z"
CABLE TRAY	40 FEET	40 FEET	5 FEET

## SWAY BRACE LOCATIONS AND SPACING FOR CABLOFIL PW CABLE TRAY

NOTE: REFER TO SPECIFICATIONS, LOOS & CO., INC. MANUAL AND TABLES FOR BRACE SPACING, REQUIRED BRACE LOCATIONS, LOAD CALCULATIONS PROCEDURES, SIZING, AND ALLOWABLE LOADS ON BRACE ASSEMBLIES AND FASTENERS.

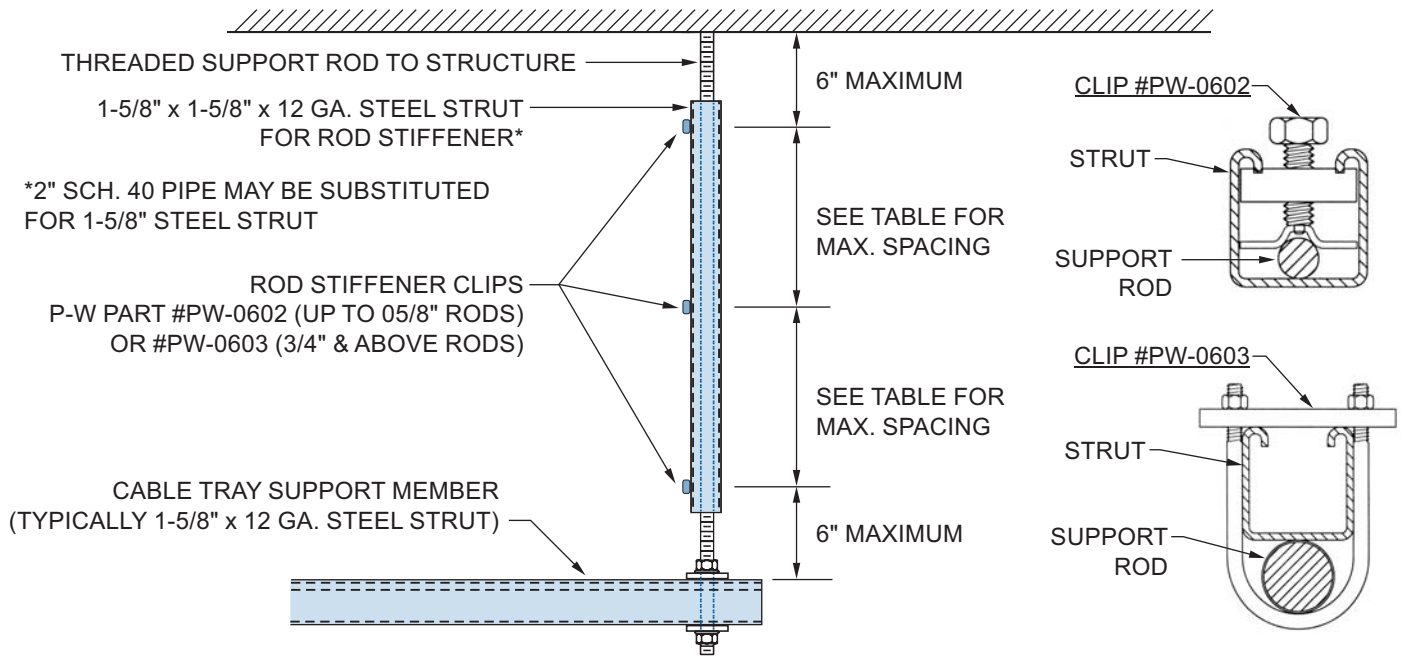


**Approved Fixed Equipment Anchorage**  
 California Office of Statewide Health Planning  
 and Development (OSHPD)  
 Based on CBC 2001 OPA-0619

**City of Los Angeles Tested and Approved**  
 For all mechanical, plumbing and electrical  
 piping, conduit, equipment and systems -  
 including fire sprinklers

# SEISMIC WIRE ROPE/CABLE™ BRACING

Break Strength Certified - Color Coded - Prestretched



1. MAXIMUM ALLOWABLE LENGTH OF 1-5/8" x 1-5/8" x 12 GA. STEEL STRUT FOR ROD STIFFENER IS 9'-0".
2. FOR SUPPORT RODS 9'-1" TO 13'-1", SLEEVE THE SUPPORT ROD WITH 2" SCHEDULE 40 PIPE.
3. FOR MULTI-TIER SUPPORT SYSTEMS, THE STEEL STRUT ROD STIFFENER SHALL BE INSTALLED SUCH THAT IT BE SECURED TO THE SIDE OF THE BOTTOM SUPPORT MEMBER, IN CONTACT WITH THE STRUCTURE, AND HELD IN POSITION BY SECURING TO THE SIDE OF ONE OTHER HORIZ. SUPPORT MEMBER, USING THE #SPW-0113 ROD STIFFENER CLIPS SHOWN ABOVE.

MAXIMUM ROD LENGTH WITHOUT STIFFENER	
ROD DIAMETER	MAXIMUM LENGTH
3/8"	16"
1/2"	22"
5/8"	28"
3/4"	34"
7/8"	40"
1"	46"

MAXIMUM SPACING OF ROD STIFFENER CLIPS	
ROD DIAMETER	MAXIMUM SPACING
3/8"	13"
1/2"	18"
5/8"	23"
3/4"	28"
7/8"	33"
1"	38"

## SUPPORT ROD STIFFENER DETAILS AND REQUIREMENTS (AT SWAY BRACE LOCATIONS ONLY)

NOTE: REFER TO SPECIFICATIONS, LOOS & CO., INC. MANUAL AND TABLES FOR BRACE SPACING, REQUIRED BRACE LOCATIONS, LOAD CALCULATIONS PROCEDURES, SIZING, AND ALLOWABLE LOADS ON BRACE ASSEMBLIES AND FASTENERS.

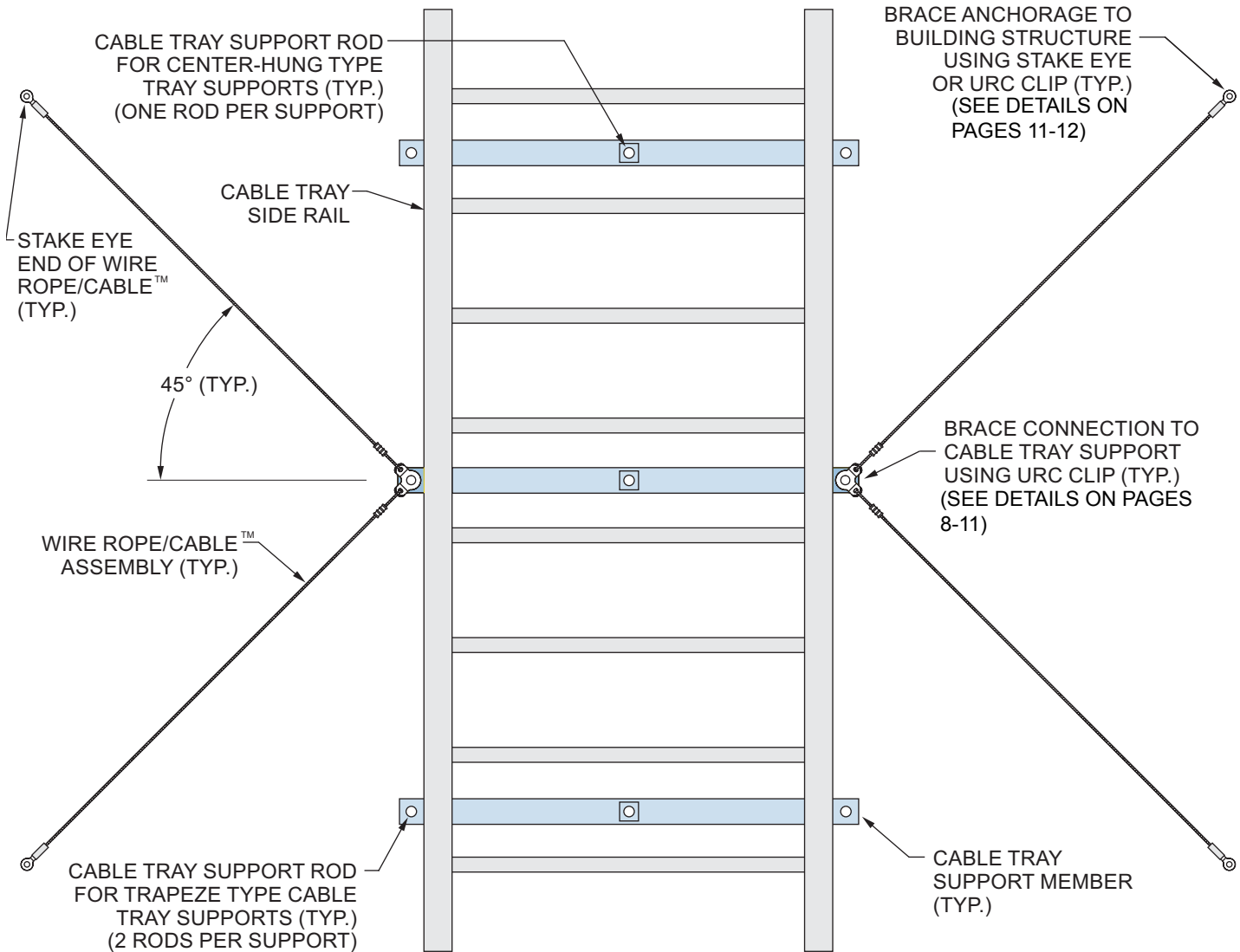


Approved Fixed Equipment Anchorage  
California Office of Statewide Health Planning  
and Development (OSHPD)  
Based on CBC 2001 OPA-0619

City of Los Angeles Tested and Approved  
For all mechanical, plumbing and electrical  
piping, conduit, equipment and systems -  
including fire sprinklers

# SEISMIC WIRE ROPE/CABLE™ BRACING

Break Strength Certified - Color Coded - Prestretched



PLAN VIEW

## COMBINATION TRANSVERSE / LONGITUDINAL EARTHQUAKE SWAY BRACE FOR FOR CABLOFIL PW (DOUBLE RAIL) CABLE TRAY

NOTE: REFER TO SPECIFICATIONS, LOOS & CO., INC. MANUAL AND TABLES FOR BRACE SPACING, REQUIRED BRACE LOCATIONS, LOAD CALCULATION PROCEDURES, SIZING, AND ALLOWABLE LOADS ON BRACE ASSEMBLIES AND FASTENERS.

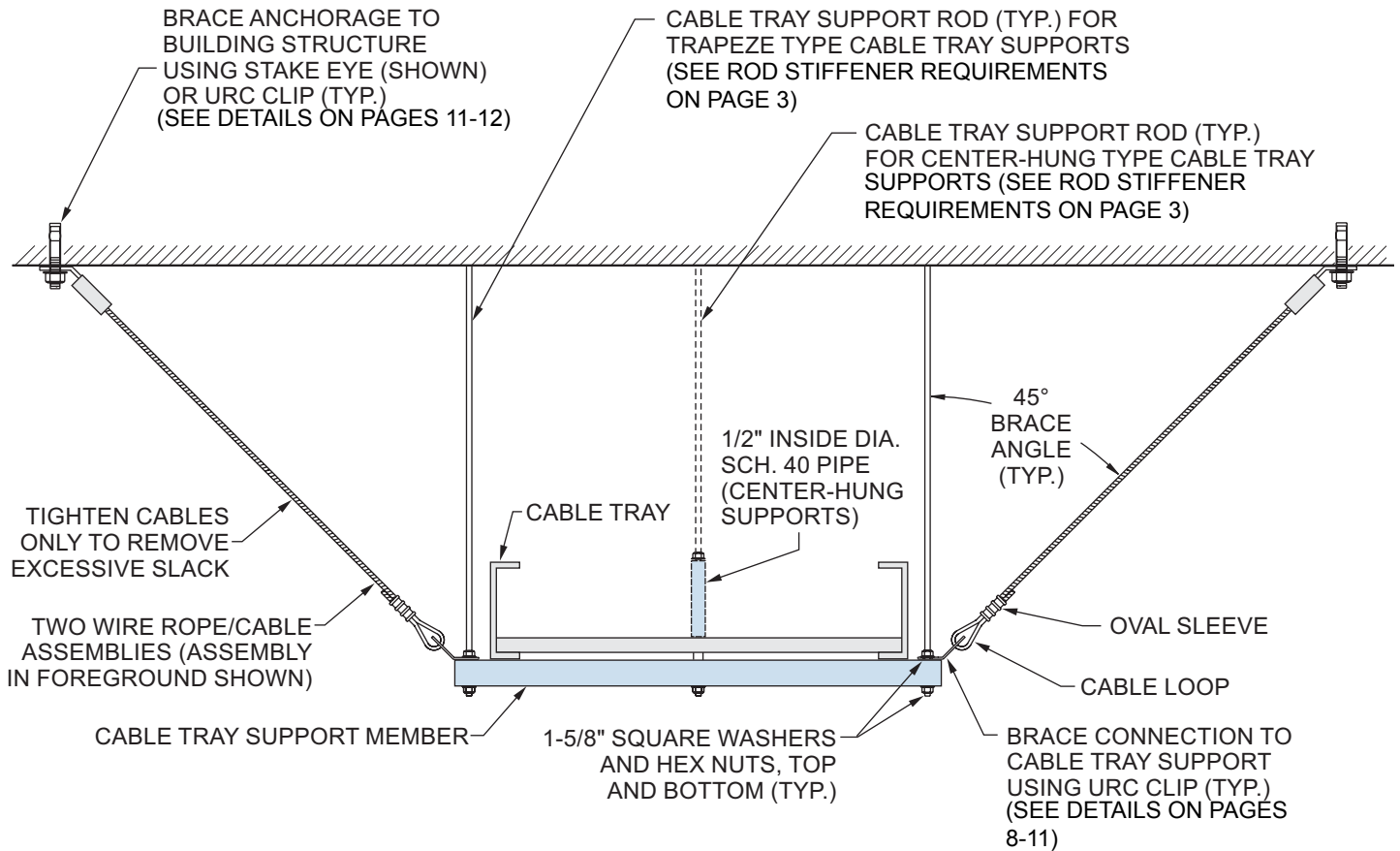


**Approved Fixed Equipment Anchorage**  
 California Office of Statewide Health Planning  
 and Development (OSHPD)  
 Based on CBC 2001 OPA-0619

**City of Los Angeles Tested and Approved**  
 For all mechanical, plumbing and electrical  
 piping, conduit, equipment and systems -  
 including fire sprinklers

## SEISMIC WIRE ROPE/CABLE™ BRACING

Break Strength Certified - Color Coded - Prestretched



### ELEVATION

TRAPEZE STYLE CABLE TRAY SUPPORT IS SHOWN (2 RODS PER SUPPORT).  
 CENTER-HUNG STYLE CABLE TRAY SUPPORT IS SIMILAR (1 ROD PER SUPPORT).

## COMBINATION TRANSVERSE / LONGITUDINAL EARTHQUAKE SWAY BRACE FOR FOR CABLOFIL PW (DOUBLE RAIL) CABLE TRAY

NOTE: REFER TO SPECIFICATIONS, LOOS & CO., INC. MANUAL AND TABLES FOR BRACE SPACING, REQUIRED BRACE LOCATIONS, LOAD CALCULATION PROCEDURES, SIZING, AND ALLOWABLE LOADS ON BRACE ASSEMBLIES AND FASTENERS.

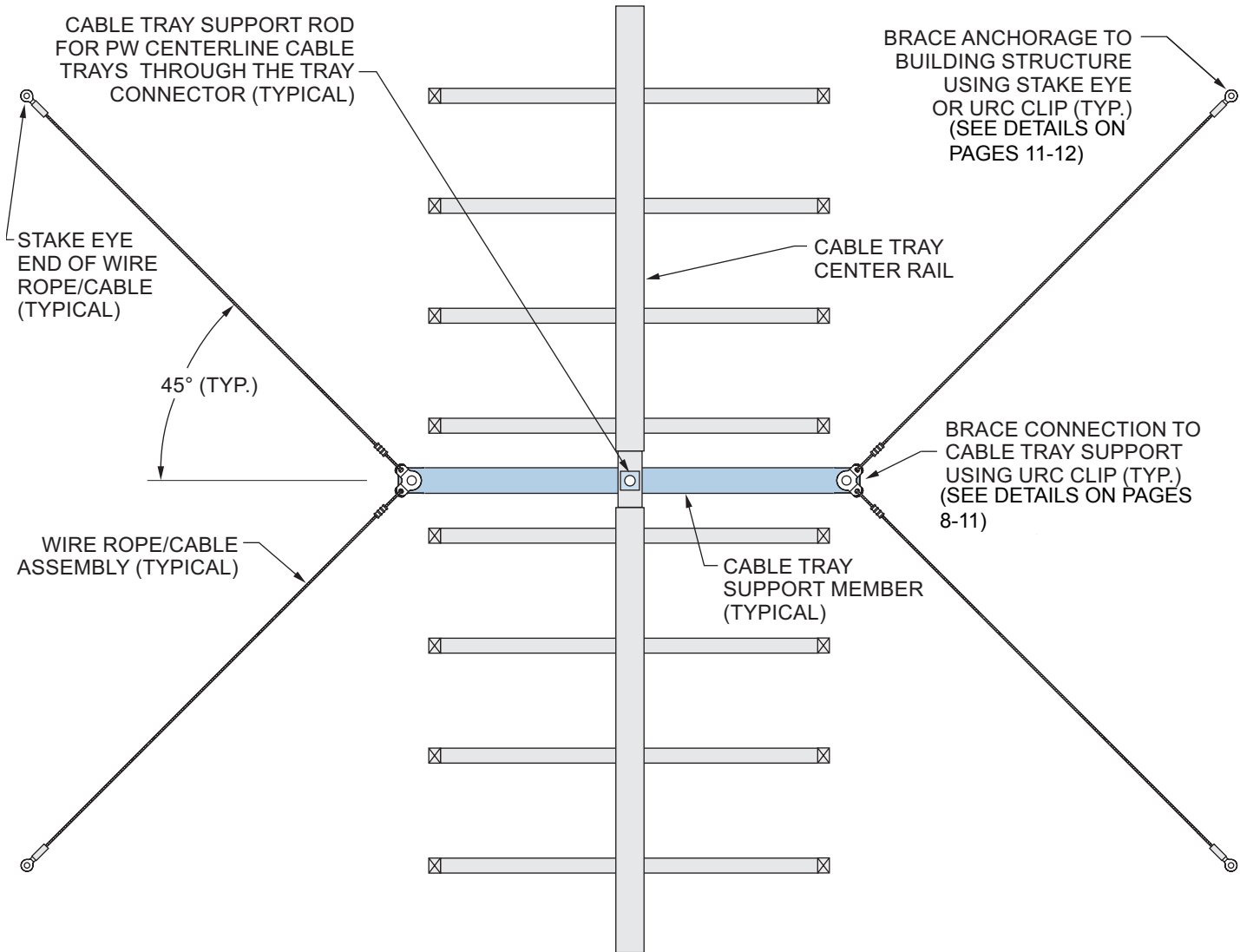


Approved Fixed Equipment Anchorage  
California Office of Statewide Health Planning  
and Development (OSHPD)  
Based on CBC 2001 OPA-0619

City of Los Angeles Tested and Approved  
For all mechanical, plumbing and electrical  
piping, conduit, equipment and systems -  
including fire sprinklers

# SEISMIC WIRE ROPE/CABLE™ BRACING

Break Strength Certified - Color Coded - Prestretched



### PLAN VIEW

## COMBINATION TRANSVERSE / LONGITUDINAL EARTHQUAKE SWAY BRACE FOR CABLOFIL PW (SINGLE RAIL) CABLE TRAY

NOTE: REFER TO SPECIFICATIONS, LOOS & CO., INC. MANUAL AND TABLES FOR BRACE SPACING, REQUIRED BRACE LOCATIONS, LOAD CALCULATION PROCEDURES, SIZING, AND ALLOWABLE LOADS ON BRACE ASSEMBLIES AND FASTENERS.

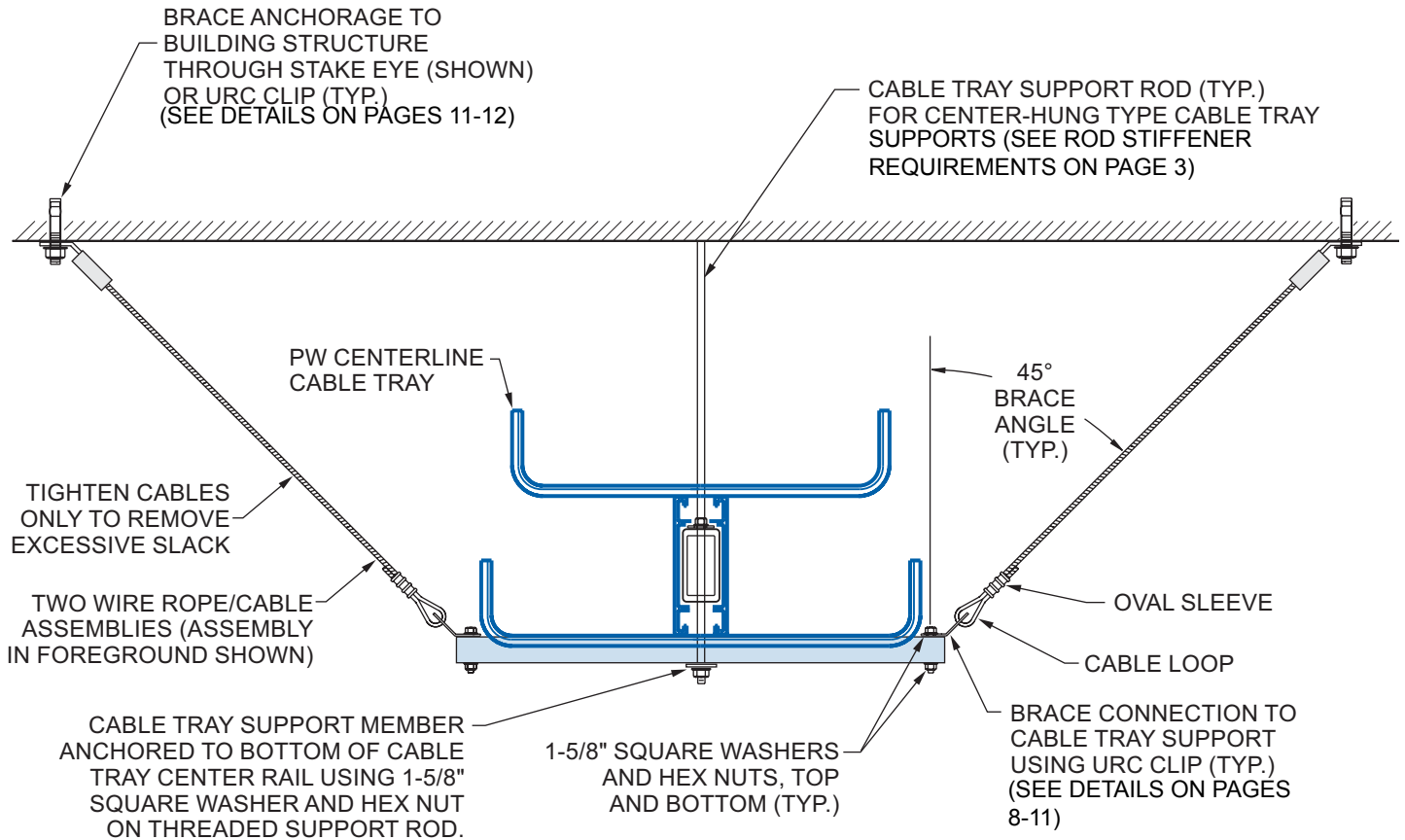


**Approved Fixed Equipment Anchorage**  
 California Office of Statewide Health Planning  
 and Development (OSHPD)  
 Based on CBC 2001 OPA-0619

**City of Los Angeles Tested and Approved**  
 For all mechanical, plumbing and electrical  
 piping, conduit, equipment and systems -  
 including fire sprinklers

## SEISMIC WIRE ROPE/CABLE™ BRACING

Break Strength Certified - Color Coded - Prestretched



### ELEVATION

NOTE: PW CENTERLINE CABLE TRAY SERIES '08' IS SHOWN. THE INSTALLATION OF OTHER SERIES OF PW SINGLE-RAIL CABLE TRAYS SHALL BE SIMILAR.

## COMBINATION TRANSVERSE / LONGITUDINAL EARTHQUAKE SWAY BRACE FOR CABLOFIL PW (SINGLE RAIL) CABLE TRAY

NOTE: REFER TO SPECIFICATIONS, LOOS & CO., INC. MANUAL AND TABLES FOR BRACE SPACING, REQUIRED BRACE LOCATIONS, LOAD CALCULATION PROCEDURES, SIZING, AND ALLOWABLE LOADS ON BRACE ASSEMBLIES AND FASTENERS.

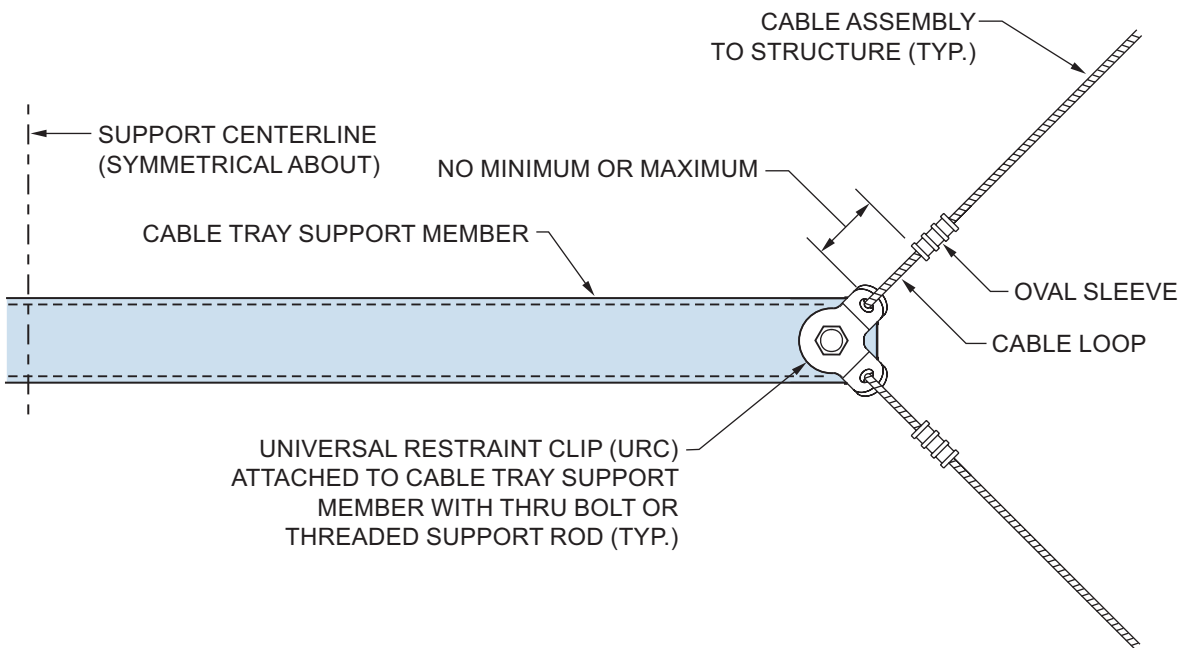


Approved Fixed Equipment Anchorage  
California Office of Statewide Health Planning  
and Development (OSHPD)  
Based on CBC 2001 OPA-0619

City of Los Angeles Tested and Approved  
For all mechanical, plumbing and electrical  
piping, conduit, equipment and systems -  
including fire sprinklers

## SEISMIC WIRE ROPE/CABLE™ BRACING

Break Strength Certified - Color Coded - Prestretched



### DETAIL A

PLAN VIEW OF CABLE BRACE CONNECTION  
TO CABLE TRAY SUPPORT MEMBER

## TYPICAL CABLE BRACE CONNECTIONS TO CABLE TRAY SUPPORTS

NOTE: REFER TO SPECIFICATIONS, LOOS & CO., INC. MANUAL AND TABLES FOR BRACE SPACING, REQUIRED BRACE LOCATIONS, LOAD CALCULATION PROCEDURES, SIZING, AND ALLOWABLE LOADS ON BRACE ASSEMBLIES AND FASTENERS.

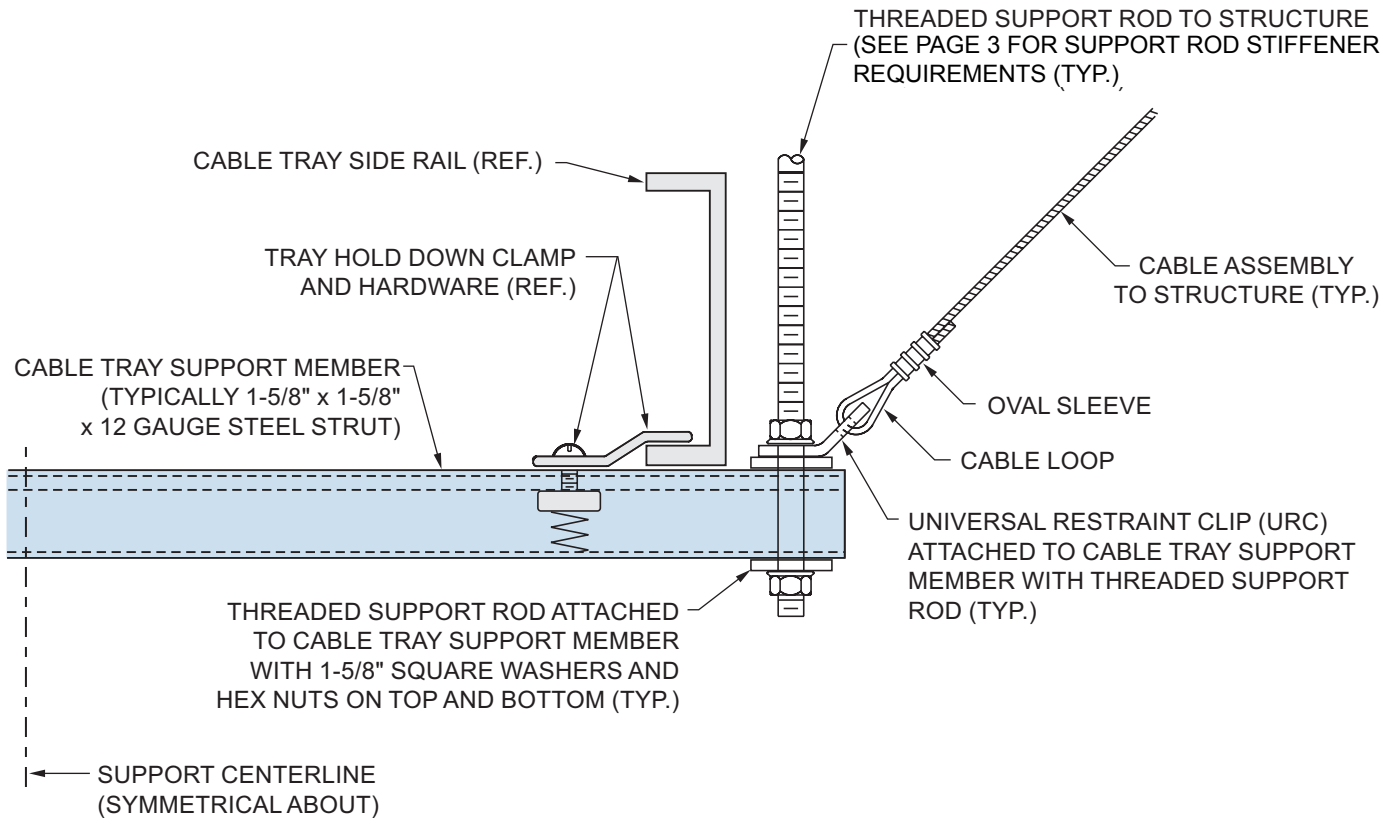


**Approved Fixed Equipment Anchorage**  
 California Office of Statewide Health Planning  
 and Development (OSHPD)  
 Based on CBC 2001 OPA-0619

**City of Los Angeles Tested and Approved**  
 For all mechanical, plumbing and electrical  
 piping, conduit, equipment and systems -  
 including fire sprinklers

## SEISMIC WIRE ROPE/CABLE™ BRACING

Break Strength Certified - Color Coded - Prestretched



### DETAIL B

#### SIDE VIEW OF CABLE BRACE CONNECTION TO TRAPEZE TYPE TRAY SUPPORT WITH URC CLIP ATTACHED TO THREADED ROD

FLANGE-IN STYLE CABLE TRAY IS SHOWN. INSTALLATION FOR FLANGE-OUT STYLE TRAY IS SIMILAR. FOR FLANGE-OUT STYLE TRAYS OR TRAYS WHICH UTILIZE A HOLD DOWN CLAMP ON THE OUTSIDE OF THE TRAY SIDE RAIL, INCREASE THE LENGTH OF THE TRAY SUPPORT MEMBER AS NEEDED.

## TYPICAL CABLE BRACE CONNECTIONS TO CABLE TRAY SUPPORTS

NOTE: REFER TO SPECIFICATIONS, LOOS & CO., INC. MANUAL AND TABLES FOR BRACE SPACING, REQUIRED BRACE LOCATIONS, LOAD CALCULATION PROCEDURES, SIZING, AND ALLOWABLE LOADS ON BRACE ASSEMBLIES AND FASTENERS.

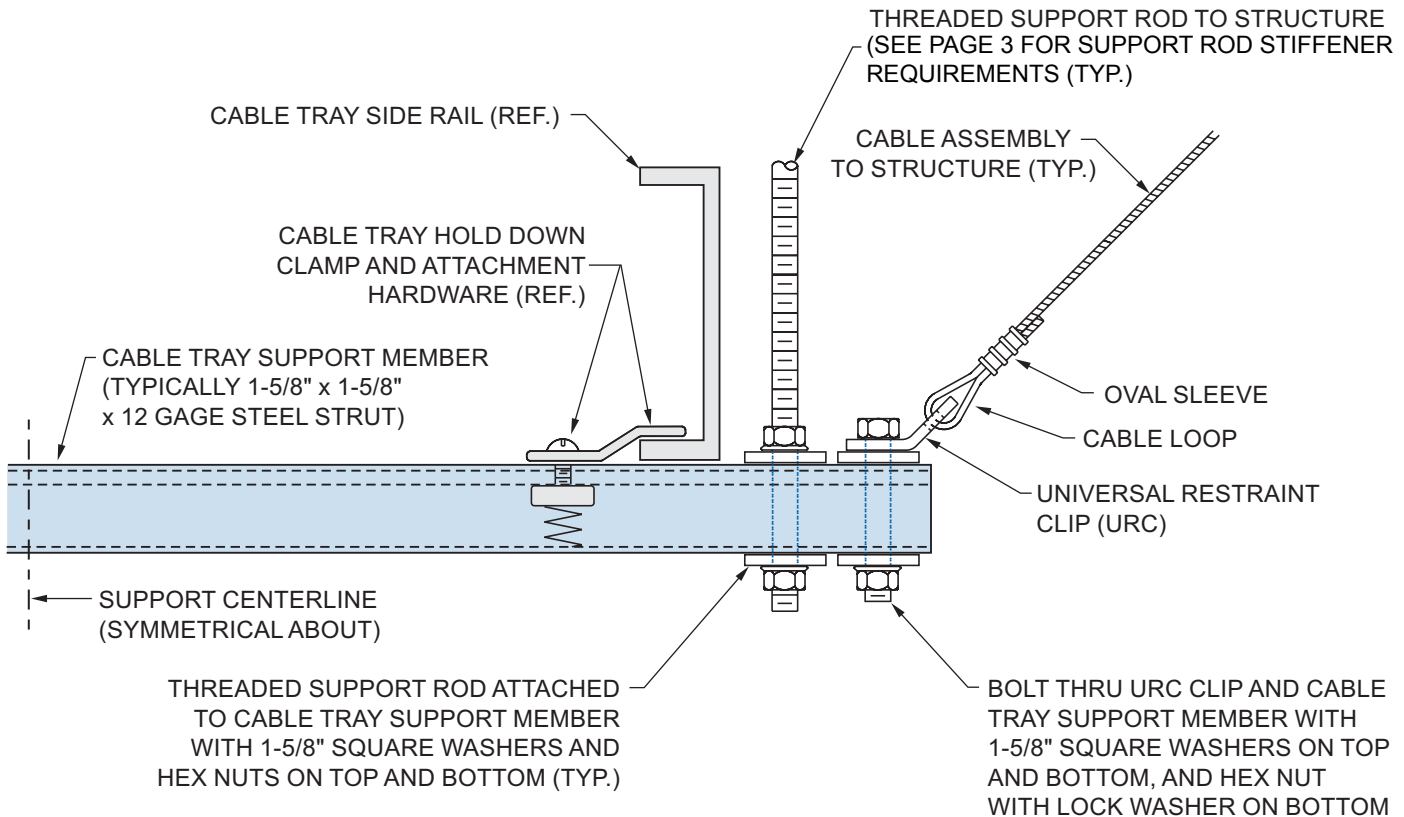


**Approved Fixed Equipment Anchorage**  
 California Office of Statewide Health Planning  
 and Development (OSHPD)  
 Based on CBC 2001 OPA-0619

**City of Los Angeles Tested and Approved**  
 For all mechanical, plumbing and electrical  
 piping, conduit, equipment and systems -  
 including fire sprinklers

# SEISMIC WIRE ROPE/CABLE™ BRACING

Break Strength Certified - Color Coded - Prestretched



### DETAIL C

**SIDE VIEW OF CABLE BRACE CONNECTION TO TRAPEZE TYPE  
 CABLE TRAY SUPPORT WITH URC CLIP ATTACHED TO THE SUPPORT MEMBER  
 (URC CLIP ATTACHMENT IS INDEPENDENT OF THREADED SUPPORT ROD)**

FLANGE-IN STYLE CABLE TRAY IS SHOWN. INSTALLATION FOR FLANGE-OUT STYLE TRAY IS SIMILAR. FOR FLANGE-OUT STYLE TRAYS OR TRAYS WHICH UTILIZE A HOLD DOWN CLAMP ON THE OUTSIDE OF THE TRAY SIDE RAIL, INCREASE THE LENGTH OF THE TRAY SUPPORT MEMBER AS NEEDED.

## TYPICAL CABLE BRACE CONNECTIONS TO CABLE TRAY SUPPORTS

NOTE: REFER TO SPECIFICATIONS, LOOS & CO., INC. MANUAL AND TABLES FOR BRACE SPACING, REQUIRED BRACE LOCATIONS, LOAD CALCULATION PROCEDURES, SIZING, AND ALLOWABLE LOADS ON BRACE ASSEMBLIES AND FASTENERS.

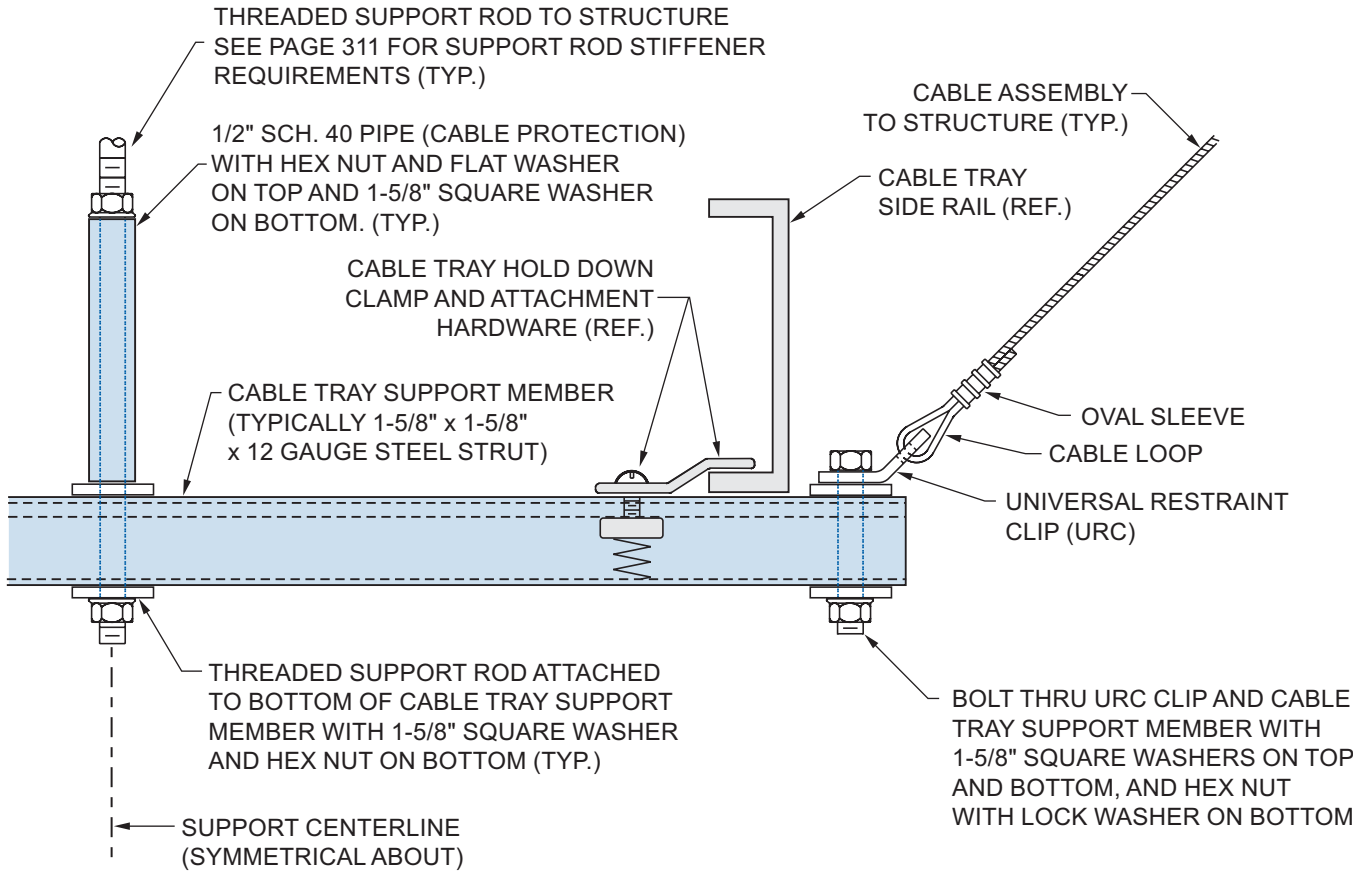


**Approved Fixed Equipment Anchorage**  
 California Office of Statewide Health Planning  
 and Development (OSHPD)  
 Based on CBC 2001 OPA-0619

**City of Los Angeles Tested and Approved**  
 For all mechanical, plumbing and electrical  
 piping, conduit, equipment and systems -  
 including fire sprinklers

## SEISMIC WIRE ROPE/CABLE™ BRACING

Break Strength Certified - Color Coded - Prestretched



### DETAIL D

#### SIDE VIEW OF CABLE BRACE CONNECTION TO CENTER HUNG TYPE TRAY SUPPORT WITH URC CLIP ATTACHED TO SUPPORT MEMBER

FLANGE-IN STYLE CABLE TRAY IS SHOWN. INSTALLATION FOR FLANGE-OUT STYLE TRAY IS SIMILAR. INSTALLATION FOR PW CENTERLINE CABLE TRAYS WITH SINGLE RAIL IS ALSO SIMILAR, WITH THREADED SUPPORT ROD ATTACHED TO THE TRAY CONNECTOR (PIPE NOT REQUIRED AS SHOWN IN DETAIL ABOVE). FOR FLANGE-OUT STYLE TRAYS OR TRAYS WHICH UTILIZE A HOLD DOWN CLAMP ON THE OUTSIDE OF THE TRAY SIDE RAIL, INCREASE THE LENGTH OF THE TRAY SUPPORT MEMBER AS NEEDED.

## TYPICAL CABLE BRACE CONNECTIONS TO CABLE TRAY SUPPORTS

NOTE: REFER TO SPECIFICATIONS, LOOS & CO., INC. MANUAL AND TABLES FOR BRACE SPACING, REQUIRED BRACE LOCATIONS, LOAD CALCULATION PROCEDURES, SIZING, AND ALLOWABLE LOADS ON BRACE ASSEMBLIES AND FASTENERS.

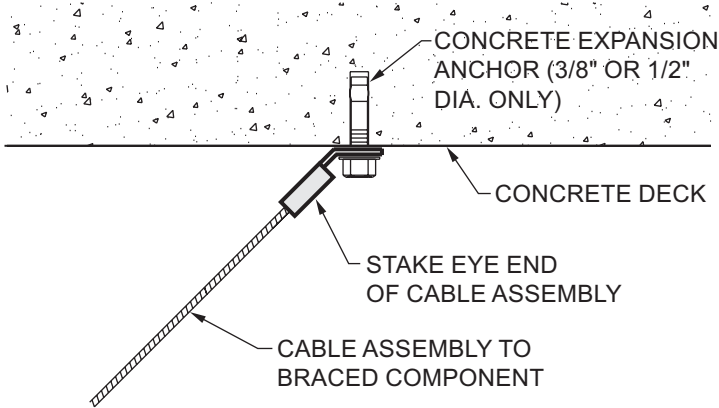


Approved Fixed Equipment Anchorage  
California Office of Statewide Health Planning  
and Development (OSHPD)  
Based on CBC 2001 OPA-0619

City of Los Angeles Tested and Approved  
For all mechanical, plumbing and electrical  
piping, conduit, equipment and systems -  
including fire sprinklers

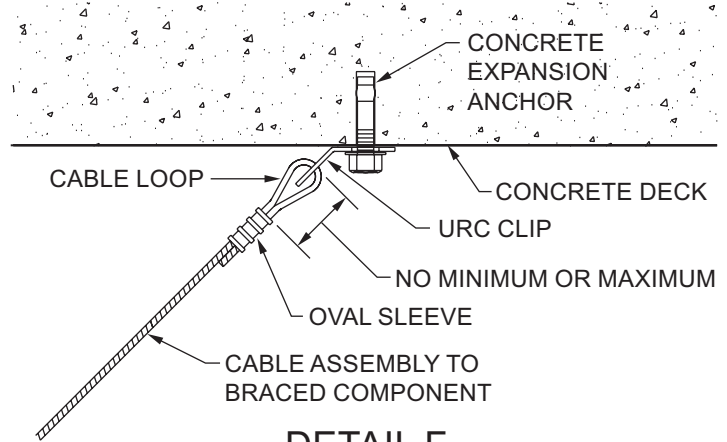
## SEISMIC WIRE ROPE/CABLE™ BRACING

Break Strength Certified - Color Coded - Prestretched



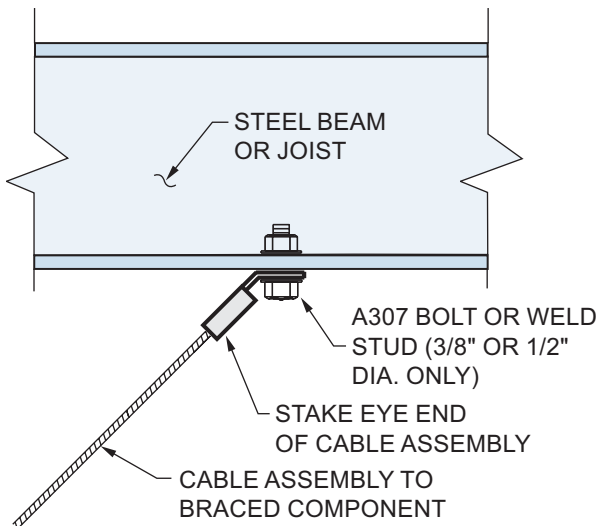
**DETAIL E**

**CABLE BRACE WITH STAKE EYE ANCHORED TO CONCRETE DECK**



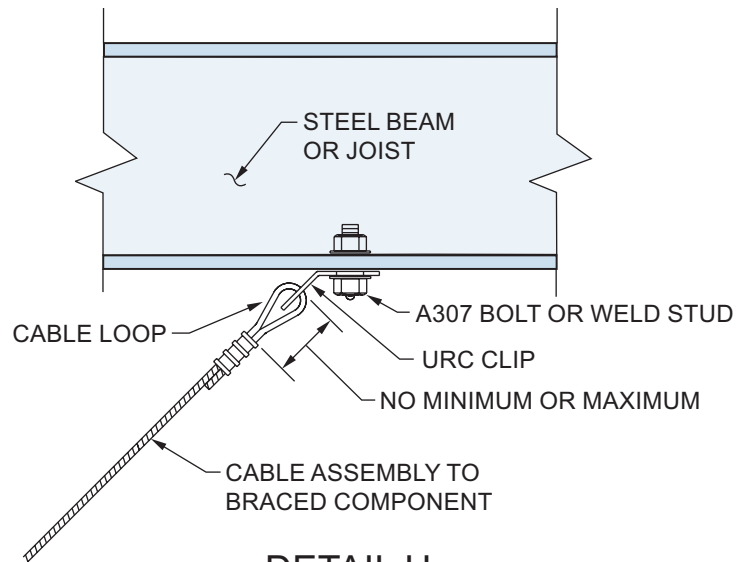
**DETAIL F**

**CABLE BRACE WITH CABLE LOOP ANCHORED TO CONCRETE DECK USING URC CLIP**



**DETAIL G**

**CABLE BRACE WITH STAKE EYE ANCHORED TO STEEL BEAM OR JOIST**



**DETAIL H**

**CABLE BRACE WITH CABLE LOOP ANCHORED TO STEEL BEAM OR JOIST USING URC CLIP**

## SAMPLE DETAILS OF CABLE ANCHORAGE TO STRUCTURE FOR CABLOFIL PW CABLE TRAY

NOTE: REFER TO SPECIFICATIONS, LOOS & CO., INC. MANUAL AND TABLES FOR BRACE SPACING, REQUIRED BRACE LOCATIONS, LOAD CALCULATION PROCEDURES, SIZING, AND ALLOWABLE LOADS ON BRACE ASSEMBLIES AND FASTENERS.

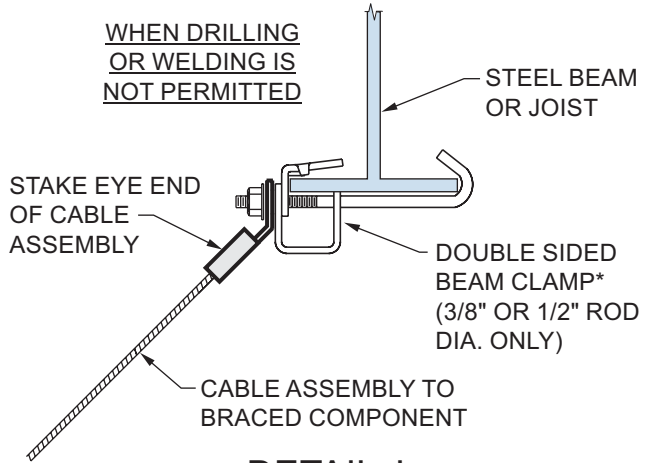


**Approved Fixed Equipment Anchorage**  
 California Office of Statewide Health Planning  
 and Development (OSHPD)  
 Based on CBC 2001 OPA-0619

**City of Los Angeles Tested and Approved**  
 For all mechanical, plumbing and electrical  
 piping, conduit, equipment and systems -  
 including fire sprinklers

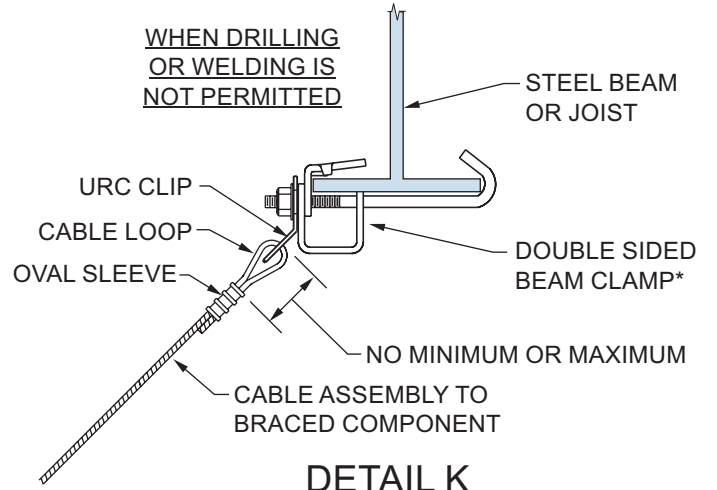
# SEISMIC WIRE ROPE/CABLE™ BRACING

Break Strength Certified - Color Coded - Prestretched



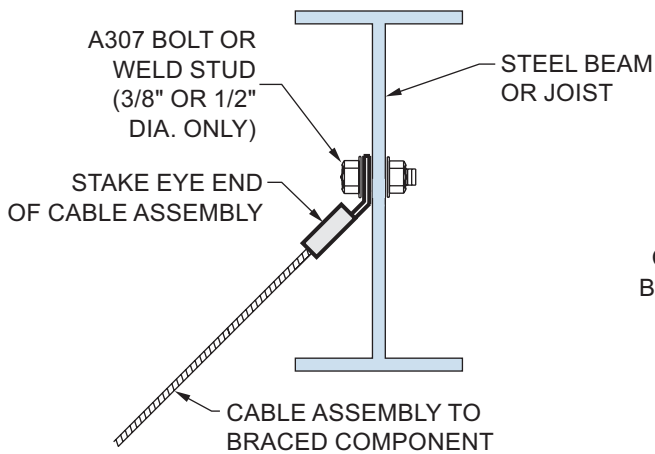
**DETAIL J**

**CABLE BRACE WITH STAKE EYE ANCHORED TO DOUBLE SIDED BEAM CLAMP (\*MIN. CLAMP ROD DIA. PER COL. 'B' OF BRACING TABLES)**



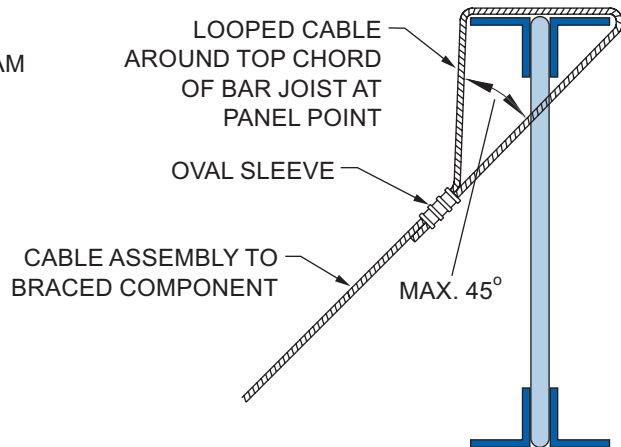
**DETAIL K**

**CABLE BRACE WITH CABLE LOOP ANCHORED TO DOUBLE SIDED BEAM CLAMP USING URC CLIP (\*MIN. CLAMP ROD DIA. PER COL. 'B' OF BRACING TABLES)**



**DETAIL L**

**CABLE BRACE WITH STAKE EYE ANCHORED TO STEEL BEAM**



**DETAIL M**

**CABLE BRACE LOOPED CONNECTION AROUND TOP CHORD OF BAR JOIST AT PANEL POINT**

## SAMPLE DETAILS OF CABLE BRACE ANCHORAGE TO STRUCTURE FOR CABLOFIL PW CABLE TRAY

NOTE: REFER TO SPECIFICATIONS, LOOS & CO., INC. MANUAL AND TABLES FOR BRACE SPACING, REQUIRED BRACE LOCATIONS, LOAD CALCULATION PROCEDURES, SIZING, AND ALLOWABLE LOADS ON BRACE ASSEMBLIES AND FASTENERS.