



Long Span, Heavy Duty Tray



Look to Cablofil/Legrand for cable trays that can handle extremely heavy loads and long spans in industrial applications.

CABLOFIL®



Heavy Duty Cable Trays built to Handle the Load.



Long span trays are needed where conditions require support spans over 20' (NEMA 20C). PW long span, heavy duty cable tray is designed with structural I-beam side rails for outdoor industrial applications in chemical plants, mining complexes and oil refineries for roadway crossings and pipe bridges.

- 40' Aluminum and 50' Steel Support Spans
- Designed for extremely heavy loads
- 8" & 10" Side rail options
- Strut rungs accept spring nuts for clamps, conduits & boxes
- Ladder, Trough, & Solid-Bottom designs
- Complete line of radius fittings, covers & accessories

Widths (W)

6	9	12	18	24	30	36	in
---	---	----	----	----	----	----	----

Rail Heights (H)

8	10	in
---	----	----

Lengths (L)

10	12	16	18	20	22	24	26	28	30	32	34	36	38	40	45	50	ft
----	----	----	----	----	----	----	----	----	----	----	----	----	----	----	----	----	----

Long Span, Heavy Duty — Straight Sections

A

ALUMINUM

- Lightweight
- Copper-free aluminum alloy
- Corrosion resistant
- Use indoors or outdoors

RAIL HEIGHT	LOAD DEPTH	RAIL FLANGE	NEMA CLASS	CSA CLASS Ladder type only	LADDER	VENTILATED / TROUGH	SOLID BOTTOM
8"	6"	3"	20C+	-			
	7"	2 1/2"			4823	4833	5823
10"	8"	4"			4812	4832	5812
					4904	4907	5934

G

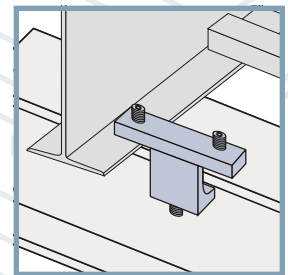
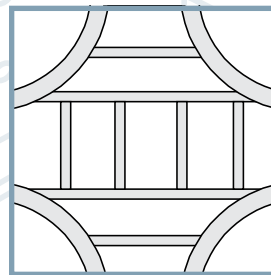
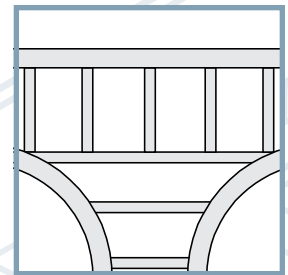
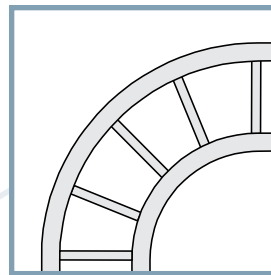
STEEL

- Higher load capacity
- Corrosion resistant
- Mostly for outdoor use

RAIL HEIGHT	LOAD DEPTH	RAIL FLANGE	NEMA CLASS	CSA CLASS Ladder type only	LADDER	VENTILATED / TROUGH	SOLID BOTTOM
8"	6"	2 1/4"	20C+	-			
		4"			1952	1962	1972
					1953	1963	1973
10"	5"	4"			1954	1964	1974



Long span tray is available in two finishes: aluminum and steel. Our aluminum alloy is copper-free and corrosion resistant and it's lightweight and is easy to install. Steel tray is hot dip galvanized after fabrication providing excellent weather protection for heavy load applications.

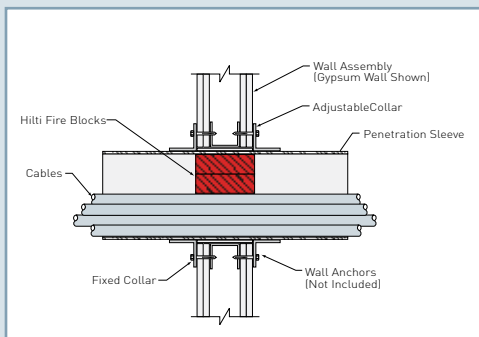
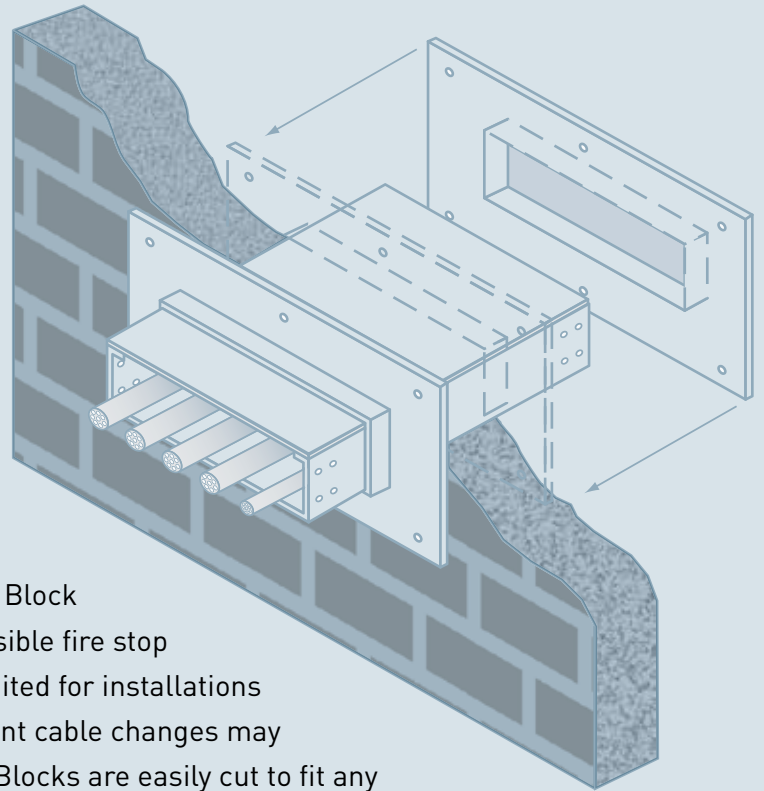


AMP RATING	SAFE LOAD DATA (LBS./FT.) SUPPORT SPAN (FT.) / DEFLECTION (IN.)																									
	10		12		16		18		20		22		24		26		28		30		34		36		40	
2000	734	0.32	734	0.67	422	1.20	333	1.52	270	1.88	218	2.22	179	2.58	150	2.98	127	3.39	108	3.81	76	4.44	64	4.70	48	5.31
2000	1168	0.50	811	0.72	456	1.28	360	1.62	292	2.00	236	2.37	194	2.75	162	3.17	137	3.60	117	4.05	82	4.69	69	4.97	52	5.70
2000	1450	0.26	1111	0.41	625	0.74	494	0.93	400	1.15	331	1.39	278	1.66	237	1.94	204	2.25	178	2.59	138	3.32	123	3.73	100	4.60

AMP RATING	SAFE LOAD DATA (LBS./FT.) SUPPORT SPAN (FT.) / DEFLECTION (IN.)																									
	20		22		24		26		28		30		32		34		36		38		40		45		50	
600	203	0.88	167	1.06	141	1.27	120	1.49	103	1.72	90	1.98	81	2.22	68	2.47	60	2.72	54	3.06	48	3.31				
600	360	0.98	298	1.18	250	1.41	213	1.65	184	1.92	160	2.20	139	2.47	121	2.74	107	3.05	95	3.35	85	3.69	66	4.00	51	5.37
600	900	1.04	744	1.26	625	1.50	533	1.77	459	2.05	400	2.35	347	2.64	304	2.95	268	3.26	238	3.60	212	3.94	164	4.87	124	5.62

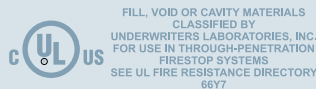
Firestop Systems from Cablofil/Legrand®

Pre-Fabricated cable tray firestop sleeves combined with Hilti Firestop products are an economical alternative to the high cost of fabricating protective firewall and floor penetration sleeves in the field. This firestop system provides a rigid support for cable tray in a UL classified system approved for firewall and floor penetrations.



The Hilti Fire Block is a compressible fire stop brick, well suited for installations where frequent cable changes may be required. Blocks are easily cut to fit any space and can be removed and reinstalled when cable configurations change. When exposed to fire, the blocks expand to lock the seal in place.

Designed for single runs of cable tray, the 20" sleeve length will accommodate up to an 8" wall thickness with 6" protruding from each side of the wall. After the sleeve is placed in the wall or floor, a sliding collar slides over it completing the installation. The sleeve ends are pre-punched to allow splices to connect cable tray to the sleeve.



CABLOFIL®



www.cablofil.com
 Phone 800-658-4641
 618-566-3230
 Fax 618-566-3250
 8319 State Route 4
 Mascoutah, IL 62258 USA

03/09